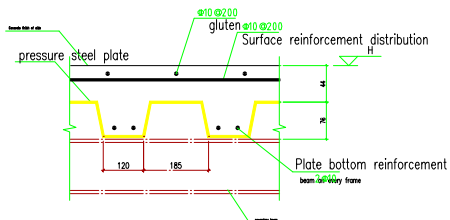
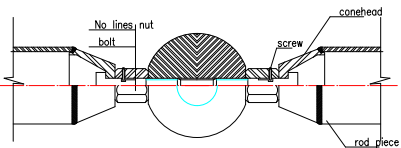


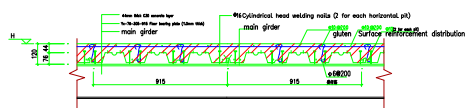
Grid ball node diagram



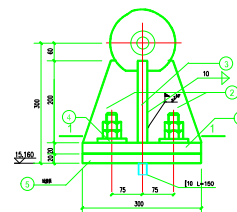
Cast-in-place floor reinforcement



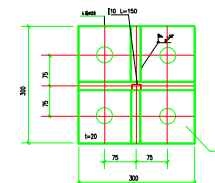
Rod and ball connection node diagram



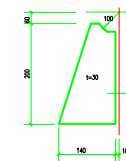
Detail drawing of floor bearing plate installation



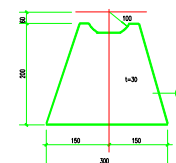
Support details



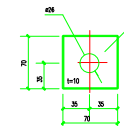
1-1



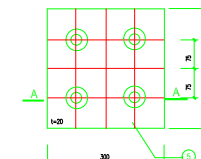
node plate



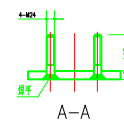
node plate



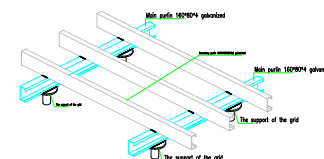
Sma square pad



The transition plate



A-A



Installation diagram of primary and secondary purlins

- Support description**
1. Refer to the grid installation drawing and layout drawing for support positioning.
  2. Unmarked weld height is 10mm-full welding.
  3. Use E5016 electrode for the weld between the balling ball and the cross steel plate, and then weld the ball at 150-200C heat.
  4. In order to ensure the accuracy of size and Angle of screw ball and cross steel plate. Use a special positioning rack.
  5. Secure them using double nuts.